

The logo features the text "EZ" in a large, bold, white font with a blue outline, followed by "LOADER" in a smaller, bold, blue font with a white outline. The text is set against a background of a stylized globe showing the Americas, which is partially obscured by a red and blue diagonal design element.

EZ LOADER

HOW THE WORLD GETS TO THE WATER

A red EZ Loader boat trailer is shown from a side-rear perspective. It has a red frame, a white deck, and a black tire. The trailer is parked on a paved surface. The background is a red and blue diagonal design element.

**CUSTOM
WELDED BOAT TRAILERS**



ABOUT EZ

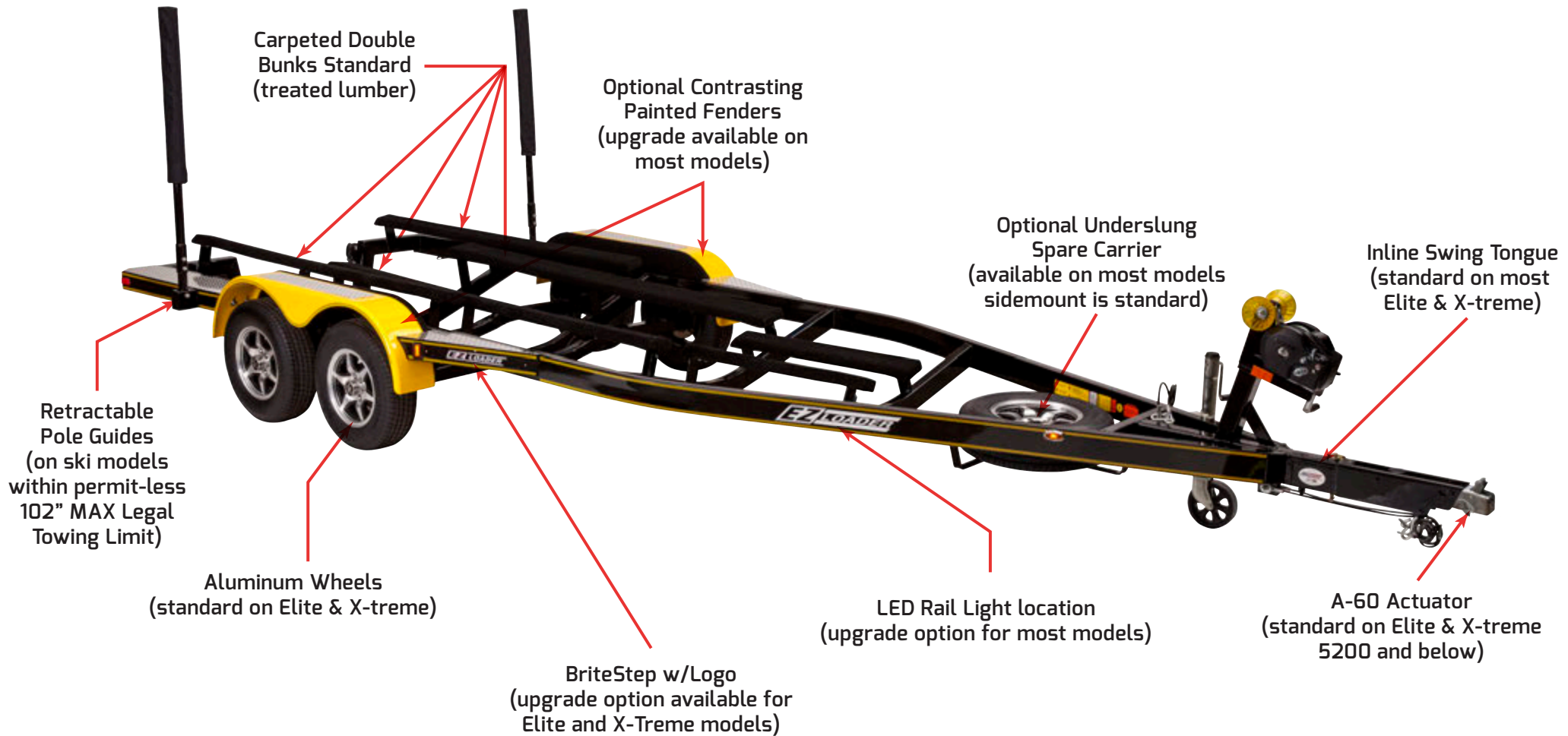
Why is EZ Loader "How the World Gets to the Water?"

EZ Loader's mission has been and will continue to be "TO BUILD QUALITY, SAFE AND DURABLE WORLD-CLASS BOAT TRAILERS AND DELIVER WITH EXTRAORDINARY CUSTOMER SERVICE." Since 1953, Larry Johnson, founder of EZ Loader Boat Trailers, and his family have been leaders in the manufacturing business making boat trailers. Growing from a small service station in Spokane, Washington, to a worldwide company, EZ Loader has manufactured millions of trailers. We have three divisions, three manufacturing facilities, and 10 distribution centers within the United States. EZ Loader also maintains three more distribution centers in Canada and another 10 across the globe for a total of 24 worldwide. EZ Loader has been manufacturing boat trailers longer than any other trailer company across the globe and continues to build them in the good ole US of A, just as we have from day one.

EZ Loader Customs continues to be the market leader in quality, performance, safety, reliability, and innovation. No other company has the variety and vast number of trailers that are certified by the NMMA and meet the compliance verifications of NATM. Only one company has proven to be the boat trailer company who brings the world to the water... the whole world.

CUSTOM FIT TRAILER

FEATURES



Free roadside assistance included on all trailers with Carlisle Radial Tires.
(See Carlisle One Plus warranty for more information.)

All components are subject to change without notice based on availability.

Aluminum SERIES

THE BEST LOOKING ALUMINUM TRAILER AVAILABLE!

The aluminum series from EZ Loader offers corrosion resistant, go anywhere trailers. Our aluminum, welded frame trailers are manufactured using our exclusive patented I-Tube or I-Beam materials. Aluminum trailers will provide years of dependable service even in the most brutal coastal environments. These trailers are also great for use in inland markets where the features above give long lasting service and great looks. Options are available to enhance the corrosion protection and add style to your aluminum trailer.

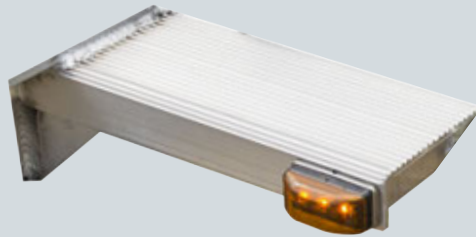


NOTE: PATENTED I-TUBE TRAILER PICTURED ABOVE CONTAINS OPTIONAL EQUIPMENT

STANDARD FEATURES

- Torsion Axle Suspension (coastal and custom fit patented I-Tube models)
- Welded Aluminum Frames
- Disc Brakes on All Axles
- Radial Tires (most I-Beam and all Patented I-Tube models)
- Stainless Steel Hardware
- LED Running Lights
- Modular Wiring Harness

Aluminum SERIES



**KNURLED STEP
W/GUSSET
(STANDARD)**



**LED LIGHTING
(STANDARD)**



**ALUMINUM FENDERS
(OPTIONAL)**



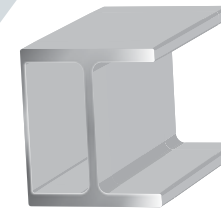
**LOAD GUIDES
(OPTIONAL)**



**TUFF COAT ON AXLES,
TONGUE & WINCH STAND
(OPTIONAL)**



**GALVANIZED V-5
(STANDARD)**



**PATENTED
I-TUBE**



I-BEAM

POPULAR AVAILABLE OPTIONS

(For a more complete list of available options see your EZ loader Dealer or visit www.ezloader.com)

- Composite Bunk Covers
- Retractable Tie Downs
- Full Rear Steps
- Tuff Coat Finish on Galvanized Steel Components
- Stainless Steel Hardware
- Swing Tongue
- LED Rail Lights With Dealer or Brand Logos
- Aluminum Wheel

WATERSPORT PONTOON SERIES

EZ LOADER HAS THE PONTOON TRAILER FOR YOU!

EZ Loader Custom Trailers offers a wide range of pontoon trailers that include our Value Series, Adjustable or Fitted Bunk Series and Aluminum Series. All of our pontoon trailers come standard with a bow boarding ladder that includes a handrail. In addition, models are available to fit both pontoon and triple-toon boat configurations. No matter what your needs are, EZ Loader has the pontoon trailer for you.



NOTE: EXECUTIVE TRAILER PACKAGE (TOP) CONTAINS OPTIONAL EQUIPMENT NOT ON OUR STANDARD WATERSPORT PONTOON (BOTTOM)

STANDARD FEATURES

- Spring Axle Suspension
- Welded Steel Frames
- Transom Steps
- Disc Brakes on All Axles
- Painted Wheels (galvanized on Aluminum models)
- Modular Wiring Harness
- Winchstand Boarding Ladder
- LED Lights

WATERSPORT PONTON SERIES

**VALUE
LADDER
(STANDARD ON
VALUE MODELS)**



**ALUMINUM WHEEL
(OPTIONAL)**



**STAINLESS STEEL
EXECUTIVE LADDER
(STANDARD ON
EXECUTIVE
& X-TREME MODELS)**



**STANDARD LADDER
W DROP STEP
(STANDARD ON
ADJUSTABLE AND
FITTED BUNK MODELS)**



**PAINTED STEEL WHEEL
(STANDARD)**



**TRANSOM STEP
(STANDARD ON
WATERSPORT MODELS)**

**BOARD LOAD GUIDES
(OPTIONAL)**



POPULAR AVAILABLE OPTIONS

(For a more complete list of available options see your EZ loader Dealer or visit www.ezloader.com)

- Composite Bunk Covers
- Tuff Coat Finish
- Stainless Steel Hardware
- Retractable Tie Downs

Executive Upgrade Package

Aluminum Wheels, Polished Stainless Steel Ladder, Deluxe Full Front Steps with Cutouts, Full Rear Steps with Vertical Lighting, LED Rail Lights with Logo, Composite Bunk Covers, F2 Winch & Jack, Retractable Tie Downs

X-treme Upgrade Package

All Executive Package Items Plus
18" Tires & Wheels

WATERSPORT ELITE SERIES

FEATURES YOU WANT AT A PRICE YOU WILL LOVE!

The Elite series of welded trailers from EZ Loader comes standard with everything that boaters need to get their boats to and from the water at a competitive price. The look and design of the Elite series complements the engineered safety and durability built into each trailer. Standard features include welded steel frames, aluminum wheels, radial tires and LED lights. Models are available to fit outboard & sterndrive powered boats, forward drive boats and inboard powered boats. Trailers are available in capacities ranging from a 1,800 lb single axle model up to a 14,500 lb. triple axle model.

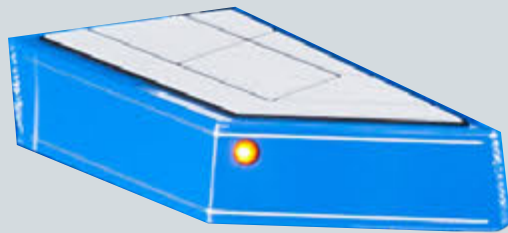


NOTE: ELITE TRAILER PICTURED ABOVE SHOWN WITH OPTIONAL EQUIPMENT

STANDARD FEATURES

- Spring Axle Suspension
- Welded Steel Frames
- Disc Brakes on All Axles
- SurfTurf Step Covers
- Modular Wiring Harness
- Swing Tongues (5,800lb. capacity and under)
- Radial Tires
- LED Lights
- Aluminum Wheels

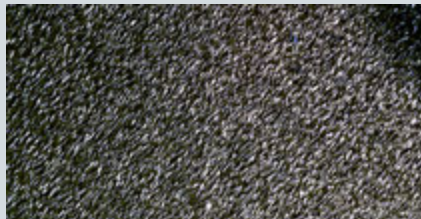
WATERSPORT ELITE SERIES



**SURFTURF
TOPPED STEP
(STANDARD)**



**SILVER
ALUMINUM
(STANDARD)**



**TUFFCOAT FINISH
(OPTIONAL)**



OPEN

**INLINE SWING
TONGUE
(STANDARD)**



CLOSED

**UNDERSLUNG SPARE CARRIER
(OPTIONAL)**



**RETRACTABLE
TIE DOWNS
(OPTIONAL)**



**LED GLOLIGHT
TAIL LIGHTS (STANDARD)**

POPULAR AVAILABLE OPTIONS

(For a more complete list of available options see your EZ loader Dealer or visit www.ezloader.com)

- Composite Bunk Covers
- Tuff Coat or Galvanized Finish
- Matching Spare w/Carrier

Step Upgrades

- Aluminum Step Covers
- Laser Cutout Step Frames

- Torsion Axle Suspension (spring only on tri-axles models)
- Wrap Around Transom Steps and Pole Guides

WATERSPORT X-TREME SERIES

YOUR BOAT DESERVES THE CRAFTSMANSHIP OF AN X-TREME TRAILER !

The X-Treme is our premier sport boat trailer. The content and design of this trailer will turn heads and get you to the water in style. Everything you want comes standard on the X-Treme. Standard features include: 18" aluminum wheels, radial tires, LED lights and color matched custom paint. Put your boat on a trailer that will be the envy of all.



NOTE: X-TREME TRAILER PICTURED ABOVE CONTAINS OPTIONAL EQUIPMENT

STANDARD FEATURES

- Torsion Axle Suspension (spring axles on tri-axle models)
- Welded Steel Frames
- Disc Brakes on All Axles
- 18" Aluminum Wheels
- Radial Tires
- Stainless Steel Hardware
- LED Running Lights
- Modular Wiring Harness
- Integrated Back Up Lights
- LED Rail Lights With Dealer or Brand Logos
- Transom Steps
- Swing Tongue
- Retractable Tie Downs

WATERSPORT X-TREME SERIES

SILVER ALUMINUM
(STANDARD)

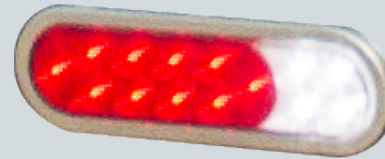


CUSTOM DELUXE STEP
W/ALUMINUM TOP
(OPTIONAL)



TRANSOM STEP (STANDARD)

LED TAIL LIGHTS
W/INTEGRATED REVERSE
(STANDARD)



POLE LOAD
GUIDE
(STANDARD)



BOARDING LADDER DROP STEP
(OPTIONAL)



BOARDING LADDER
W/DROP STEP
(OPTIONAL)



POPULAR AVAILABLE OPTIONS

(For a more complete list of available options see your EZ loader Dealer or visit www.ezloader.com)

- Composite Bunk Covers
- Tuff Coat Finish
- Runway Launch Lights
- Pole Guides (standard only on Inboard models)

Step Upgrades

- Aluminum Step Covers
- Laser Cutout Step Frames

| Model | Capacity | GVWR | Approx Trailer Length | Construction | Standard Finish | # Of Axles | Suspension | Brakes | Standard Wheels | Tire Size |
|-----------------------------------|----------|-------|-----------------------|--------------|-----------------|------------|------------|----------------|------------------|---------------|
| CUSTOM FIT ALUMINUM TUBE | | | | | | | | | | |
| CAT1600 | 1600 | 2180 | 14'-16' | Tube | Aluminum | Single | Spring | N/ A | Galv V-5 | ST175/ 80D13C |
| CAT2000 | 2000 | 2620 | 16'-18' | Tube | Aluminum | Single | Spring | N/ A | Galv V-5 | ST175/ 80D13C |
| CAT2350 | 2350 | 2995 | 18'-20' | Tube | Aluminum | Single | Spring | N/ A | Galv V-5 | ST215/ 75D14C |
| CAT3000 | 3000 | 3700 | 18'-20' | Tube | Aluminum | Single | Spring | Disc / 1 Axle | Galv V-5 | ST215/ 75D14C |
| CUSTOM FIT ALUMINUM I-BEAM | | | | | | | | | | |
| CAIB2350 | 2350 | 2960 | 16'-18' | I-BEAM | Aluminum | Single | Spring | N/ A | Galv V-5 | 185/ 80D13C |
| CAIB3000 | 3000 | 3700 | 16'-20' | I-BEAM | Aluminum | Single | Spring | Disc / 1 Axle | Galv V-5 | 215/ 75R14C |
| CAIB3800 | 3800 | 4900 | 18'-21' | I-BEAM | Aluminum | Tandem | Spring | Disc / 2 Axles | Galv V-5 | 205/ 75R14C |
| CAIB4500 | 4500 | 5600 | 20'-22' | I-BEAM | Aluminum | Tandem | Spring | Disc / 2 Axles | Galv V-5 | 205/ 75R14C |
| CAIB5200 | 5200 | 6300 | 22'-24' | I-BEAM | Aluminum | Tandem | Spring | Disc / 2 Axles | Galv V-5 | 205/ 75R14C |
| CAIB6300 | 6300 | 7900 | 23'-25' | I-BEAM | Aluminum | Tandem | Spring | Disc / 2 Axles | Galv V-5 | 205/ 75R15D |
| CAIB7200 | 7200 | 8800 | 24'-27' | I-BEAM | Aluminum | Tandem | Spring | Disc / 2 Axles | Galv V-5 | 225/ 75R15D |
| CAIB9000 | 9000 | 10850 | 26'-28' | I-BEAM | Aluminum | Tandem | Spring | Elec / 2 Axles | Galvanized | 235/ 80R16E |
| CAIB10000 | 10000 | 11952 | 26'-28' | I-BEAM | Aluminum | Tri-Axle | Spring | Elec / 3 Axles | Galvanized | 225/ 75R15D |
| CAIB15000 | 15000 | 17850 | 28'-32' | I-BEAM | Aluminum | Tri-Axle | Spring | Elec / 3 Axles | Galvanized | 235/ 80R16E |
| CUSTOM FIT ALUMINUM I-TUBE | | | | | | | | | | |
| CAIT2350 | 2350 | 2960 | 16'-18' | I-TUBE | Aluminum | Single | TORSION | N/ A | 14" Alum TURISMO | 205/ 75R14C |
| CAIT3000 | 3000 | 3700 | 16'-18' | I-TUBE | Aluminum | Single | TORSION | Disc / 1 Axle | 14" Alum TURISMO | 215/ 75R14C |
| CAIT4000 | 4000 | 5100 | 18'-20' | I-TUBE | Aluminum | Tandem | TORSION | Disc / 2 Axles | 14" Alum TURISMO | 205/ 75R14C |
| CAIT4500 | 4500 | 5800 | 20'-22' | I-TUBE | Aluminum | Tandem | TORSION | Disc / 2 Axles | 14" Alum TURISMO | 205/ 75R14C |
| CAIT5500 | 5500 | 6800 | 22'-24' | I-TUBE | Aluminum | Tandem | TORSION | Disc / 2 Axles | 14" Alum TURISMO | 215/ 75R14C |
| PONTOON ALUMINUM I-BEAM | | | | | | | | | | |
| PAIB20 | 2145 | 2995 | 18'-20' | I-BEAM | Aluminum | Single | Spring | N/ A | Galv V-5 | ST215/ 75D14C |
| PAIB20B | 2600 | 3500 | 18'-20' | I-BEAM | Aluminum | Single | Spring | Disc / 1 Axle | Galv V-5 | ST215/ 75D14C |
| PAIB1820 | 3800 | 5074 | 18'-20' | I-BEAM | Aluminum | Tandem | Spring | Disc / 2 Axles | Galv V-5 | ST175/ 80D13C |
| PAIB2224 | 4000 | 5440 | 22'-24' | I-BEAM | Aluminum | Tandem | Spring | Disc / 2 Axles | Galv V-5 | ST175/ 80D13C |
| PAIB2526 | 5500 | 7000 | 25'-26' | I-BEAM | Aluminum | Tandem | Spring | Disc / 2 Axles | Galv V-5 | ST205/ 75D14C |
| PAIB2728 | 5500 | 7150 | 27'-28' | I-BEAM | Aluminum | Tandem | Spring | Disc / 2 Axles | Galv V-5 | ST215/ 75D14C |

| Model | Capacity | GVWR | Approx Trailer Length | Construction | Standard Finish | # Of Axles | Suspension | Brakes | Standard Wheels | Tire Size |
|---|----------|------|-----------------------|--------------|-----------------|------------|------------|----------------|-----------------|---------------|
| VALUE EDITION ADJUSTABLE PONTOON | | | | | | | | | | |
| APVE1820 | 2650 | 3500 | 18'-20' | Tube | Painted Black | Single | Spring | Disc / 1 Axle | Silver Painted | ST215/ 75D14C |
| APVE2021 | 3500 | 4600 | 20'-21' | Tube | Painted Black | Tandem | Spring | Disc / 2 Axles | Silver Painted | ST175/ 80D13C |
| APVE2224 | 3800 | 5100 | 22'-24' | Tube | Painted Black | Tandem | Spring | Disc / 2 Axles | Silver Painted | ST175/ 80D13C |
| WATERSPORT ADJUSTABLE PONTOON | | | | | | | | | | |
| APW1820 | 2650 | 3500 | 18'-20' | Tube | Painted | Single | Spring | Disc / 1 Axle | Silver Painted | ST215/ 75D14C |
| APW2021 | 3500 | 4600 | 20'-21' | Tube | Painted | Tandem | Spring | Disc / 2 Axles | Silver Painted | ST175/ 80D13C |
| APW2224 | 3800 | 5100 | 22'-24' | Tube | Painted | Tandem | Spring | Disc / 2 Axles | Silver Painted | ST175/ 80D13C |
| APW2224XD | 5500 | 7200 | 22'-24' | Tube | Painted | Tandem | Spring | Disc / 2 Axles | Silver Painted | ST215/ 75D14C |
| APW2526 | 5500 | 7200 | 25'-26' | Tube | Painted | Tandem | Spring | Disc / 2 Axles | Silver Painted | ST215/ 75D14C |
| APW2728 | 5500 | 7200 | 26'-28' | Tube | Painted | Tandem | Spring | Disc / 2 Axles | Silver Painted | ST215/ 75D14C |
| APW6600 | 6600 | 9000 | 28'-32' | Tube | Painted | Tri-Axle | Spring | Disc / 3 Axles | Silver Painted | ST215/ 75D14C |
| APW7500 | 7500 | 9999 | 28'-32' | Tube | Painted | Tri-Axle | Spring | Disc / 3 Axles | Silver Painted | ST215/ 75D14C |
| APW7500XD (10-12 adj.) | 7500 | 9999 | 28'-32' | Tube | Painted | Tri-Axle | Spring | Disc / 3 Axles | Silver Painted | ST215/ 75D14C |
| WATERSPORT FITTED PONTOON | | | | | | | | | | |
| FPW1820 | 2650 | 3500 | 18'-20' | Tube | Painted | Single | Spring | Disc / 1 Axle | Silver Painted | ST215/ 75D14C |
| FPW2021 | 3500 | 4600 | 20'-21' | Tube | Painted | Tandem | Spring | Disc / 2 Axles | Silver Painted | ST175/ 80D13C |
| FPW2224 | 3800 | 5100 | 22'-24' | Tube | Painted | Tandem | Spring | Disc / 2 Axles | Silver Painted | ST175/ 80D13C |
| FPW2224XD | 5500 | 7200 | 22'-24' | Tube | Painted | Tandem | Spring | Disc / 2 Axles | Silver Painted | ST215/ 75D14C |
| FPW2526 | 5500 | 7200 | 25'-26' | Tube | Painted | Tandem | Spring | Disc / 2 Axles | Silver Painted | ST215/ 75D14C |
| FPW2728 | 5500 | 7200 | 26'-28' | Tube | Painted | Tandem | Spring | Disc / 2 Axles | Silver Painted | ST215/ 75D14C |
| FPW6600 | 6600 | 9000 | 28'-32' | Tube | Painted | Tri-Axle | Spring | Disc / 3 Axles | Silver Painted | ST215/ 75D14C |
| FPW7500 | 7500 | 9999 | 28'-32' | Tube | Painted | Tri-Axle | Spring | Disc / 3 Axles | Silver Painted | ST215/ 75D14C |

| Model | Capacity | GVWR | Approx Trailer Length | Construction | Standard Finish | # Of Axles | Suspension | Brakes | Standard Wheels | Tire Size |
|---------------------------------------|----------|-------|-----------------------|--------------|-----------------|------------|------------|------------------|---------------------|---------------|
| WATERSPORT ELITE | | | | | | | | | | |
| WSE1800 | 1800 | 2360 | 15'-18' | Tube | Painted | Single | Spring | N/A | 13" Alum CROSSTRAC | ST175/ 80R13C |
| WSE2160 | 2160 | 2720 | 16'-18' | Tube | Painted | Single | Spring | N/A | 13" Alum CROSSTRAC | ST175/ 80R13C |
| WSE2350 | 2350 | 2995 | 16'-18' | Tube | Painted | Single | Spring | N/A | 14" Alum TURISMO | ST205/ 75R14C |
| WSE3000 | 3000 | 3740 | 16'-18' | Tube | Painted | Single | Spring | Disc / 1 Axle | 14" Alum TURISMO | ST215/ 75R14C |
| WSE3850 | 3850 | 4750 | 18'-20' | Tube | Painted | Single | Spring | Disc / 1 Axle | 15" Alum 6H TURISMO | ST225/ 75R15D |
| WSE4200 | 4200 | 5100 | 20'-22' | Tube | Painted | Tandem | Spring | Disc / 2 Axles | 14" Alum TURISMO | ST205/ 75R14C |
| WSE4600 | 4600 | 5800 | 22'-24' | Tube | Painted | Tandem | Spring | Disc / 2 Axles | 14" Alum TURISMO | ST205/ 75R14C |
| WSE5200 | 5200 | 6500 | 22'-24' | Tube | Painted | Tandem | Spring | Disc / 2 Axles | 14" Alum TURISMO | ST205/ 75R14C |
| WSE5800 | 5800 | 7200 | 24'-26' | Tube | Painted | Tandem | Spring | Disc / 2 Axles | 14" Alum TURISMO | ST215/ 75R14C |
| WSE6300 | 6300 | 8250 | 24'-27' | Tube | Painted | Tandem | Spring | Disc / 2 Axles | 15" Alum 5H TURISMO | ST205/ 75R15D |
| WSE7900 | 7900 | 9900 | 25'-27' | Tube | Painted | Tandem | Spring | Disc / 2 Axles | 15" Alum 6H TURISMO | ST225/ 75R15D |
| WSE10000 | 10000 | 13002 | 27'-30' | Tube | Painted | Tri-Axle | Spring | E Drum / 3 Axles | 15" Alum 6H TURISMO | ST225/ 75R15D |
| WSE14500 | 14500 | 18000 | 30'-32' | Tube | Painted | Tri-Axle | Spring | E Drum / 3 Axles | 16" Alum 8H | ST235/ 85R16E |
| WATERSPORT ELITE FORWARD DRIVE | | | | | | | | | | |
| WSEf3300 | 3300 | 4200 | 18'-20' | Tube | Painted | Single | Spring | Disc / 1 Axle | 15" Alum 5H TURISMO | ST205/ 75R15D |
| WSEf3850 | 3850 | 4750 | 18'-20' | Tube | Painted | Single | Spring | Disc / 1 Axle | 15" Alum 6H TURISMO | ST225/ 75R15D |
| WSEf4200 | 4200 | 5300 | 18'-20' | Tube | Painted | Tandem | Spring | Disc / 2 Axles | 14" Alum TURISMO | ST205/ 75R14C |
| WSEf4600 | 4600 | 5800 | 20'-22' | Tube | Painted | Tandem | Spring | Disc / 2 Axles | 14" Alum TURISMO | ST205/ 75R14C |
| WSEf5200 | 5200 | 6500 | 22'-24' | Tube | Painted | Tandem | Spring | Disc / 2 Axles | 14" Alum TURISMO | ST205/ 75R14C |
| WSEf5800 | 5800 | 7400 | 22'-24' | Tube | Painted | Tandem | Spring | Disc / 2 Axles | 14" Alum TURISMO | ST215/ 75R14C |
| WSEf6300 | 6300 | 8250 | 24'-26' | Tube | Painted | Tandem | Spring | Disc / 2 Axles | 15" Alum 5H TURISMO | ST205/ 75R15D |
| WSEf7900 | 7900 | 9900 | 24'-26' | Tube | Painted | Tandem | Spring | Disc / 2 Axles | 15" Alum 6H TURISMO | ST225/ 75R15D |
| WSEf8000 | 8000 | 9990 | 26'-28' | Tube | Painted | Tri-Axle | Spring | Disc / 3 Axles | 15" Alum 5H TURISMO | ST205/ 75R15D |
| WATERSPORT ELITE INBOARD | | | | | | | | | | |
| WSEi3300 | 3300 | 4200 | 18'-20' | Tube | Painted | Single | TORSION | Disc / 1 Axle | 15" Alum 5H TURISMO | ST205/ 75R15D |
| WSEi3850 | 3850 | 4750 | 18'-20' | Tube | Painted | Single | TORSION | Disc / 1 Axle | 15" Alum 6H TURISMO | ST225/ 75R15D |
| WSEi4200 | 4200 | 5300 | 18'-20' | Tube | Painted | Tandem | TORSION | Disc / 2 Axles | 14" Alum TURISMO | ST205/ 75R14C |
| WSEi4600 | 4600 | 5800 | 20'-22' | Tube | Painted | Tandem | TORSION | Disc / 2 Axles | 14" Alum TURISMO | ST205/ 75R14C |
| WSEi5200 | 5200 | 6500 | 22'-24' | Tube | Painted | Tandem | TORSION | Disc / 2 Axles | 14" Alum TURISMO | ST205/ 75R14C |
| WSEi5800 | 5800 | 7400 | 22'-24' | Tube | Painted | Tandem | TORSION | Disc / 2 Axles | 14" Alum TURISMO | ST215/ 75R14C |
| WSEi6300 | 6300 | 8250 | 22'-23' | Tube | Painted | Tandem | TORSION | Disc / 2 Axles | 15" Alum 5H TURISMO | ST205/ 75R15D |
| WSEi7900 | 7900 | 9900 | 24'-25' | Tube | Painted | Tandem | TORSION | Disc / 2 Axles | 15" Alum 6H TURISMO | ST225/ 75R15D |
| WSEi8000 | 8000 | 9990 | 24'-25' | Tube | Painted | Tri-Axle | Spring | Disc / 3 Axles | 15" Alum 5H TURISMO | ST205/ 75R15D |

| Model | Capacity | GVWR | Approx Trailer Length | Construction | Standard Finish | # Of Axles | Suspension | Brakes | Standard Wheels | Tire Size |
|---|----------|------|-----------------------|--------------|-----------------|------------|------------|----------------|-----------------|--------------|
| WATERSPORT X-TREME (IO / OB) | | | | | | | | | | |
| WSX3300 | 3300 | 4200 | 18'- 21' | Tube | Color Match | Single | Torsion | Disc / 1 Axle | 18" ALUM MAMBA | 255/ 55R18XL |
| WSX4000 | 4000 | 5100 | 19'- 21' | CHANNEL | TUFF-COAT | Tandem | Torsion | Disc / 2 Axles | 18" ALUM MAMBA | 255/ 45R18XL |
| WSX4200 | 4200 | 5300 | 20'- 22' | Tube | Color Match | Tandem | Torsion | Disc / 2 Axles | 18" ALUM MAMBA | 255/ 45R18XL |
| WSX4600 | 4600 | 5900 | 22'- 24' | Tube | Color Match | Tandem | Torsion | Disc / 2 Axles | 18" ALUM MAMBA | 255/ 45R18XL |
| WSX5200 | 5200 | 6500 | 22'- 24' | Tube | Color Match | Tandem | Torsion | Disc / 2 Axles | 18" ALUM MAMBA | 255/ 45R18XL |
| WSX5800 | 5800 | 7200 | 23'- 25' | Tube | Color Match | Tandem | Torsion | Disc / 2 Axles | 18" ALUM MAMBA | 255/ 55R18XL |
| WSX6300 | 6300 | 8250 | 24'- 26' | Tube | Color Match | Tandem | Torsion | Disc / 2 Axles | 18" ALUM MAMBA | 255/ 55R18XL |
| WSX7400 | 7400 | 9450 | 24'- 26' | Tube | Color Match | Tandem | Torsion | Disc / 2 Axles | 18" MAYHEM 6H | 265/ 60R18XL |
| WSX8000 | 8000 | 9990 | 24'- 26' | Tube | Color Match | Tri-Axle | Spring | Disc / 3 Axles | 18" ALUM MAMBA | 255/ 55R18XL |
| WATERSPORT X-TREME (FORWARD DRIVE) | | | | | | | | | | |
| WSXf3300 | 3300 | 4120 | 18'- 20' | Tube | Color Match | Single | Torsion | Disc / 1 Axles | 18" ALUM MAMBA | 255/ 55R18XL |
| WSXf4200 | 4200 | 5300 | 20'- 22' | Tube | Color Match | Tandem | Torsion | Disc / 2 Axles | 18" ALUM MAMBA | 255/ 45R18XL |
| WSXf4600 | 4600 | 5900 | 22'- 24' | Tube | Color Match | Tandem | Torsion | Disc / 2 Axles | 18" ALUM MAMBA | 255/ 45R18XL |
| WSXf5200 | 5200 | 6500 | 22'- 24' | Tube | Color Match | Tandem | Torsion | Disc / 2 Axles | 18" ALUM MAMBA | 255/ 45R18XL |
| WSXf5800 | 5800 | 7200 | 23'- 25' | Tube | Color Match | Tandem | Torsion | Disc / 2 Axles | 18" ALUM MAMBA | 255/ 55R18XL |
| WSXf6300 | 6300 | 8250 | 24'- 26' | Tube | Color Match | Tandem | Torsion | Disc / 2 Axles | 18" ALUM MAMBA | 255/ 55R18XL |
| WSXf7400 | 7400 | 9450 | 24'- 26' | Tube | Color Match | Tandem | Torsion | Disc / 2 Axles | 18" MAYHEM 6H | 265/ 60R18XL |
| WSXf7800 | 7800 | 9975 | 24'- 26' | Tube | Color Match | Tri-Axle | Spring | Disc / 3 Axles | 18" ALUM MAMBA | 255/ 55R18XL |
| WATERSPORT X-TREME (INBOARD) | | | | | | | | | | |
| WSXi3300 | 3300 | 4120 | 18'- 20' | Tube | Color Match | Single | Torsion | Disc / 1 Axle | 18" ALUM MAMBA | 255/ 55R18XL |
| WSXi4200 | 4200 | 5300 | 20'- 22' | Tube | Color Match | Tandem | Torsion | Disc / 2 Axles | 18" ALUM MAMBA | 255/ 45R18XL |
| WSXi4600 | 4600 | 5900 | 22'- 24' | Tube | Color Match | Tandem | Torsion | Disc / 2 Axles | 18" ALUM MAMBA | 255/ 45R18XL |
| WSXi5200 | 5200 | 6500 | 22'- 24' | Tube | Color Match | Tandem | Torsion | Disc / 2 Axles | 18" ALUM MAMBA | 255/ 45R18XL |
| WSXi5800 | 5800 | 7200 | 23'- 25' | Tube | Color Match | Tandem | Torsion | Disc / 2 Axles | 18" ALUM MAMBA | 255/ 55R18XL |
| WSXi6300 | 6300 | 8250 | 24'- 26' | Tube | Color Match | Tandem | Torsion | Disc / 2 Axles | 18" ALUM MAMBA | 255/ 55R18XL |
| WSXi7400 | 7400 | 9450 | 24'- 26' | Tube | Color Match | Tandem | Torsion | Disc / 2 Axles | 18" MAYHEM 6H | 265/ 60R18XL |
| WSXi7800 | 7800 | 9975 | 24'- 26' | Tube | Color Match | Tri-Axle | Spring | Disc / 3 Axles | 18" ALUM MAMBA | 255/ 55R18XL |



The E-Store!

EZ Loader now provides 24/7 access to our genuine OEM replacement parts via our online parts store at store.ezloader.com! Visit the site today to shop and buy factory direct replacement and maintenance parts.



*Items shown in this catalog are subject to change.

5 YEAR LIMITED WARRANTY

EZ Loader Custom Boat Trailers, Inc. warrants each new EZ Loader Custom Boat Trailer to be free from defects in materials and workmanship for a period of 5 years from date of retail purchase or 6 years from date of manufacture, whichever comes first. EZ Loader Customs shall repair, or replace, without charge, any parts found to be defective because of imperfect workmanship or materials, within a reasonable time after the trailer is returned at purchaser's expense to EZ Loader Custom Facility and/or depending on the severity to an authorized distributor or dealer. Who is Covered: This warranty is extended to the original purchaser only and does not extend to any other persons to whom the trailer may be transferred. What is Not Covered: Provisions of this warranty shall not apply to any product which is found to have been modified or altered in any way; nor shall the warranty apply to any defect or malfunction which was caused by damage, unreasonable use, or failure to provide reasonable and necessary maintenance. The warranty will not cover damage caused by overloading the trailer beyond stated capacities located on the VIN Identification label located on the front of the inside rail of the trailer, improper adjustment of the trailer to the boat or the use of weight distribution hitches in conjunction with hydraulic surge brakes. Due to the highly corrosive conditions a trailer is exposed to, and even after utilizing one of the highest quality finishes, rust formation is not covered. This limited warranty does not cover winches, lights, couplers, actuators, brakes, tongue jacks, and tires, as these items are warranted separately by their manufacturer. Other Limitations: Races, grease type bearings and seals are covered for 90 days, while the Vault™ bearing system is warranted for 5 years from date of purchase or six years from manufacturing date. Any implied warranties, obligations, or liabilities, including but not limited to, any implied warranty of merchantability, shall be limited in duration to the six-year duration of this written limited warranty. Some states do not allow limitation on how long an implied warranty lasts, so the above limitation may not apply to you. The use of any unit as part of a rental fleet, or use for any commercial purposes, voids this warranty. The following are exclusions of EZ Loader custom warranty: Loss of time, inconvenience, towing charges, travel expenses, lodging, telephone, gas, loss or damages to personal property or loss of wages. This warranty is intended to comply with the "Magnusson-Moss Warranty Federal Trade Commission Improvement Act" and any provisions of this warranty or actions taken by EZ Loader Custom Boat Trailers pursuant to this warranty shall be construed accordingly. EZ Loader Boat Trailers, Inc. shall not be liable for any incidental or consequential damages for breach of this or any other warranty, express or implied. Some states do not allow the exclusion of limitation of incidental or consequential damages, so the above limitation or exclusion may not apply to you. The 5 year from retail sale, and/or 6 year from manufacturing date warranty went into effect 7/1/12. TRAILER MUST BE REGISTERED ON-LINE FOR THIS WARRANTY. PATENT NUMBERS: US 6,439,589 DES 410,612 US 8,322,750B2

FIND US ON FACEBOOK

LIKE OUR PAGE



870.481.5138

www.ezloader.com



MANUFACTURED IN THE USA

180629